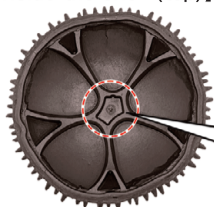
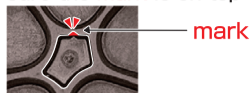


1 Arrange the shell (top) and shell (bottom) as shown on the right.

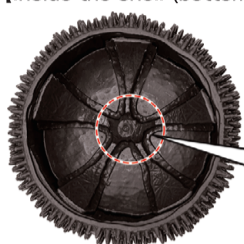
【Inside the shell (top)】



There is a **mark** shape in the center of the inside of the shell (top). Make sure the **mark** is on top.



【Inside the shell (bottom)】



Make sure that the central protrusion inside the shell (bottom) is oriented as shown on the right.



2 ① The area with the **mark** on the shell (top) is designated as ①, and the others are designated as ② to ⑤ as shown in the figure.

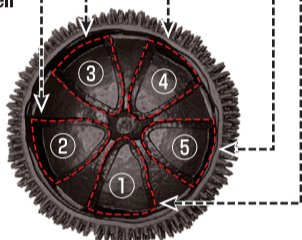
② Since it corresponds to each area of the shell (top), check the areas ① to ⑤ of (bottom).

※ Remember the number of each area of the shell (bottom) until the end.

【Inside the shell (top)】



【Inside the shell (bottom)】

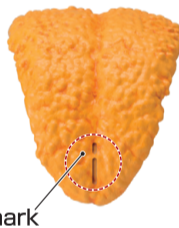


3 ① Each part has a different mark. Check the mark and number in the figure on the right.

② Insert the pieces correctly so that the number of the sea urchin and the area number of the shell (bottom) match.

※ Insert the mark with the mark facing down.

number	①	②	③	④	⑤
mark					

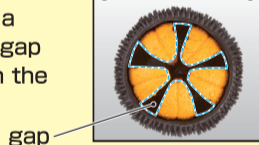


Make sure the sea urchin parts are in place.



※ Make sure that there is a uniform gap between the parts.

【View from above】



Adjust the position of the sea urchin parts by pinching them with your fingers and pushing them outward as shown in the figure on the right. Make sure that there is no gap in the part of the figure on the right.



【View from above】



If there is a tilt or misalignment as shown on the right, reinsert the parts.



※ If the gaps between the parts are not even, the shell (top) cannot be assembled.

【View from above】



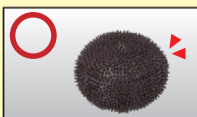
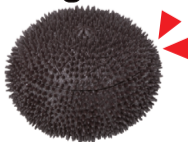
4 Cover the shell (top) from directly above.

※ Cover with the ① area of the shell (top) and the ① area of the shell (bottom) facing each other. If you do not cover it from directly above, the parts will shift and you will not be able to complete it.



Complete if there is no gap.

Complete!!



If the shell doesn't fit ...

- The area to put the parts in the sea urchin is wrong.
- Sea urchin parts are out of alignment.
- The direction of the shell (top) is wrong.



• The shell (top) is not covered from directly above

Check the above. If it is not completed by all means, start over from the beginning.