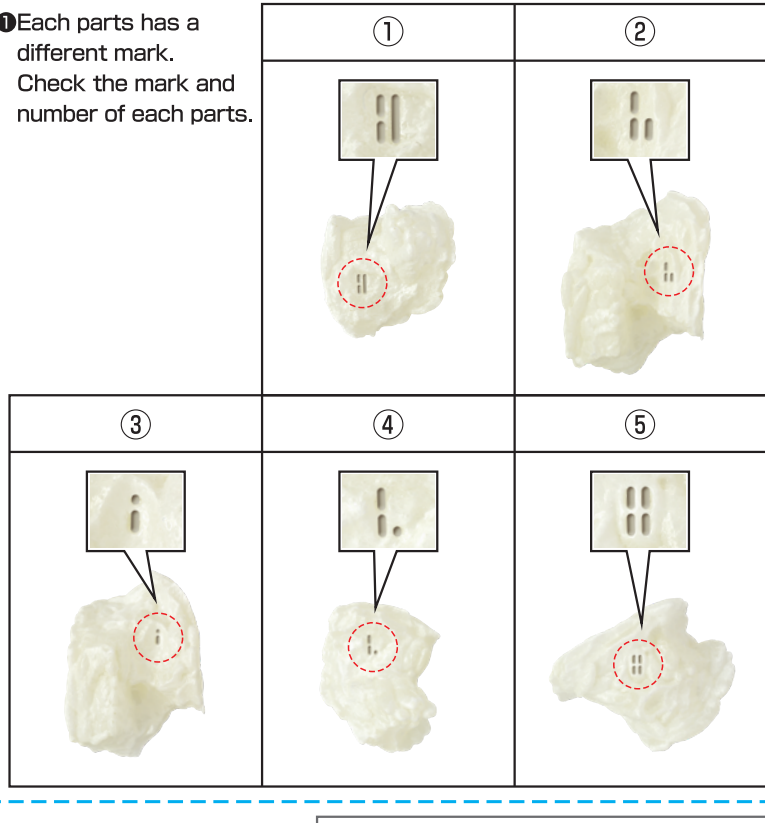
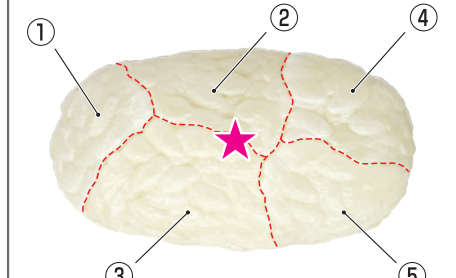


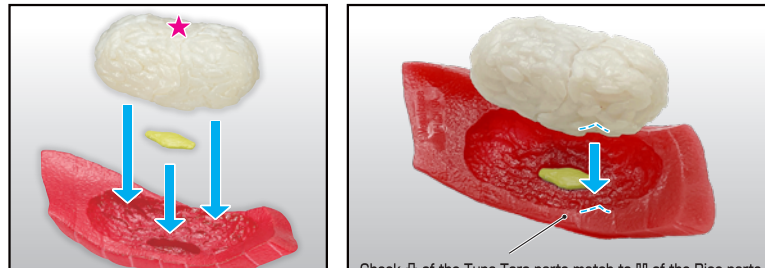
1 ● Each parts has a different mark. Check the mark and number of each parts.



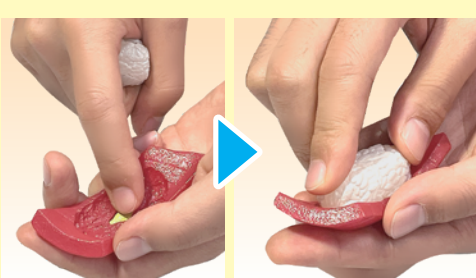
2 ● Assemble the Rice parts as shown by a diagram. Those parts need to be held. Assemble it while holding the parts in your hands. Keep the ★ side up and proceed to **2**.



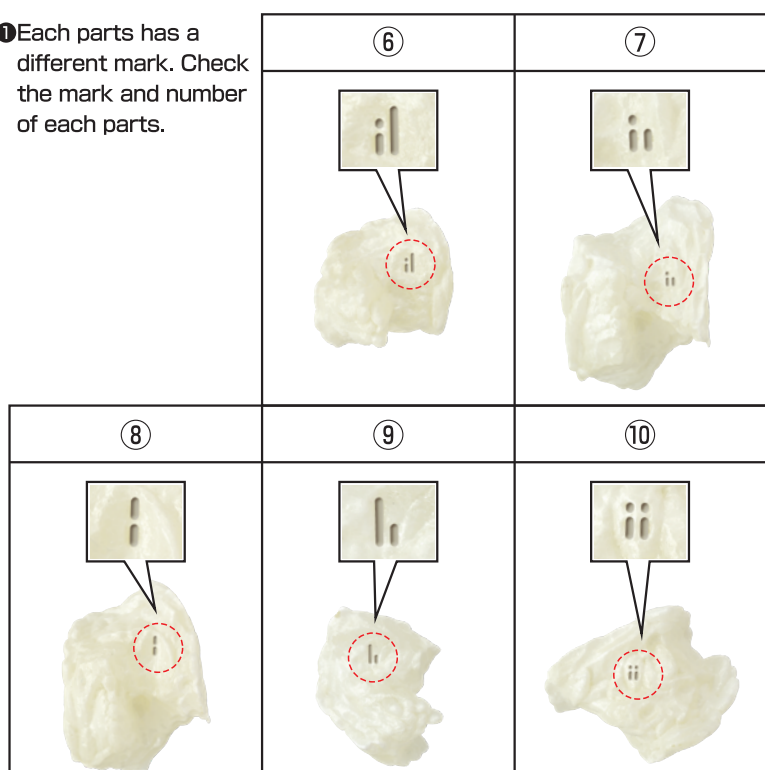
2 ● Assemble Wasabi and Rice parts to Tuna-Toro parts in order. Wasabi parts should fit correctly. Assemble Rice parts as ★ side facing upward, and push it into the Tuna-Toro parts as it's firmly seated.



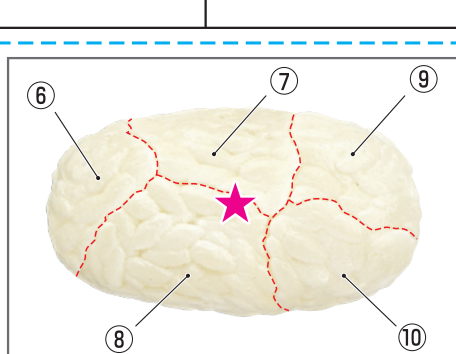
※ Assemble the Rice parts in your hands as they still need to be held.



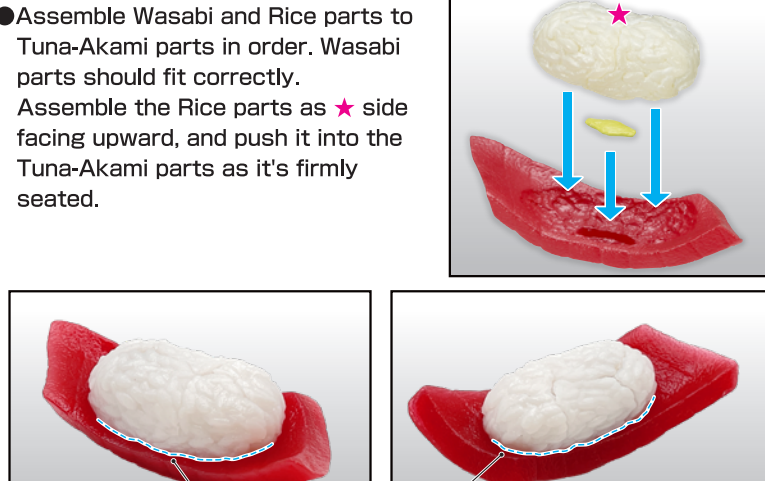
3 ● Each parts has a different mark. Check the mark and number of each parts.



2 Assemble the parts as shown by a diagram. Those parts still need to be held. Assemble it while holding the parts in your hands. Keep the ★ side up and proceed to **4**.



4 ● Assemble Wasabi and Rice parts to Tuna-Akami parts in order. Wasabi parts should fit correctly. Assemble the Rice parts as ★ side facing upward, and push it into the Tuna-Akami parts as it's firmly seated.



Assemble the rice in such a way that there is no gap between the rice and the toppings.

5 ○ **Complete!**



When three parts are put together without a gap, you're success!

※ Let's build up 2 pieces of Sushi.

✗ **Try again!**



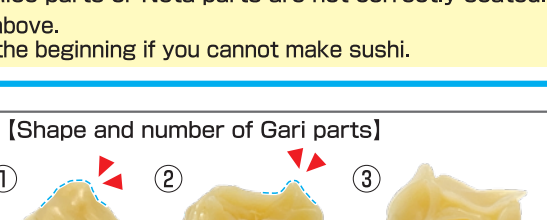
If there's a gap between the Rice and Neta parts, try again!

When there's a gap between the parts...

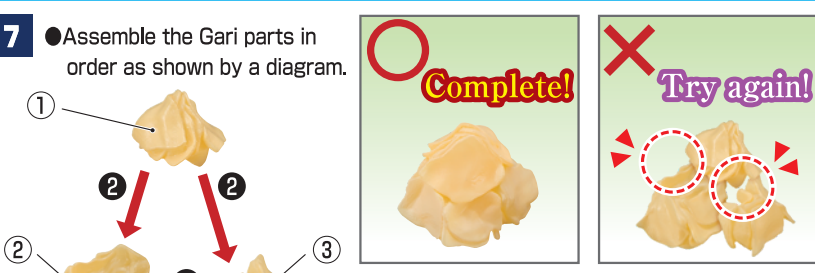
- Probably the Rice parts are not assembled correctly.
- Probably the Rice parts and Neta parts are not assembled correctly.
- Probably either the Rice parts or Neta parts are not correctly seated.

Please check out the above. Please try again from the beginning if you cannot make sushi.

6 ● Each Gari parts has a different shape. Check the shape and number of the parts.



7 ● Assemble the Gari parts in order as shown by a diagram.



When three parts are put together without a gap, you're success!

When there's a gap between the parts, try again!

Accessories

● Display the Sushi and Gari on a plate sheet.



plate sheet