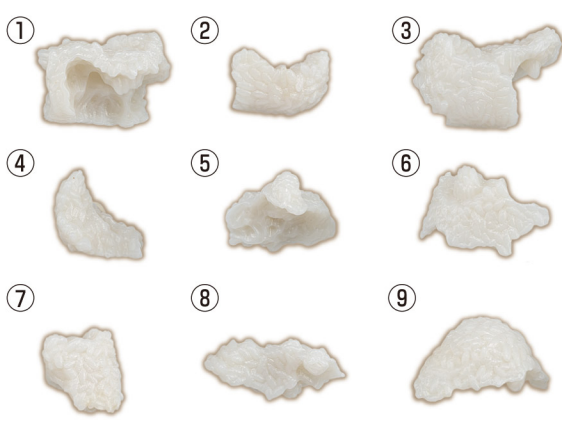


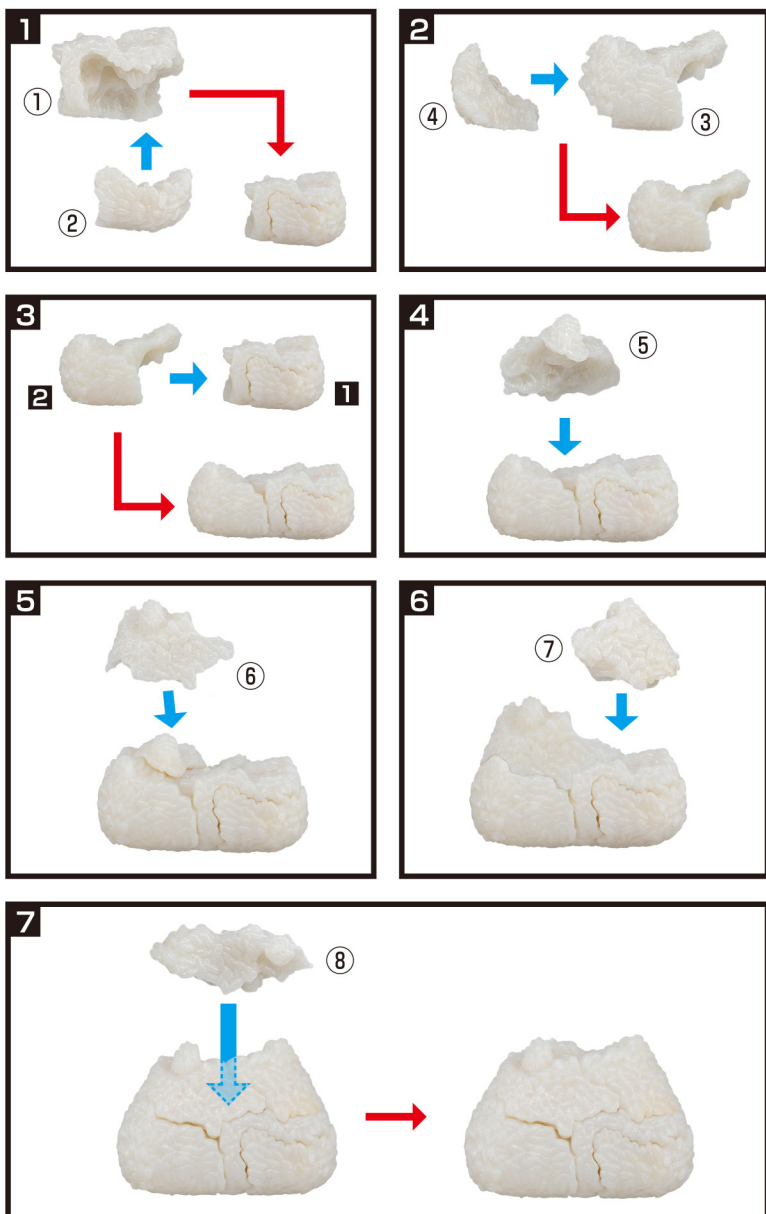
# おにぎりパズル Instructions

- 1** ●Each rice parts has a different shape. Check the shapes and corresponding numbers in the picture.

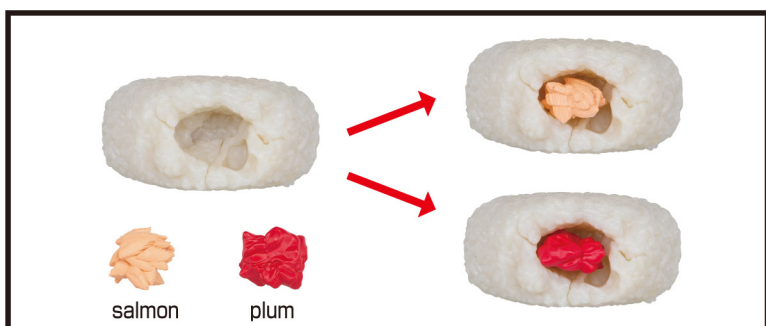
[Shapes and Numbers of the Rice parts.]



- 2** ●As shown in the picture, assemble the parts from the bottom up in order.



- 3** ●Choose either salmon or plum, and place it inside the rice ball in any direction.



- 4** ●Cover with the rice parts, press firmly on all three sides as if shaping a rice ball, then wrap it with the seaweed.



●Your rice ball is complete!



If the rice parts do not match...

- You may have assembled the rice parts in the wrong position.
- The rice parts are misaligned.



- The rice parts are oriented incorrectly.

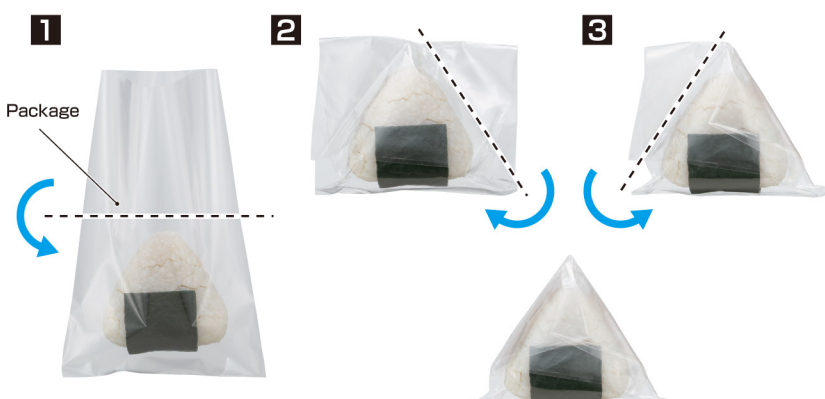
Please check the above situation.

When you still can't fix it, try again from the beginning.

## About the accessories

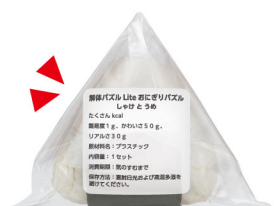
**Place the completed rice ball in the bag for display.**

- Fold sequentially along - - - - .



- Place the sticker below on the folded overlapping part to seal it.

解体パズル Lite おにぎりパズル  
しゃけとうめ  
たぐせん kcal  
難易度 1 g、かわいさ 50 g、  
リアルさ 30 g  
原材料名: プラスチック  
内容量: 1 セット  
消費期限: 賞のす日まで  
保存方法: 直射日光および高温多湿を  
避けてください。



- On the opposite side of the seal, choose and stick either the 'salmon' or 'plum' sticker shown below.

